

Better Care Fund

Briefing paper

What is the Better Care Fund?

- It has long been recognised that there is a need for greater integration of health and social care, because this can support people better and improve their health and wellbeing by ensuring continuity of care, while making best use of resources.
- In June 2013, as part of the Government's Spending Round, a £3.8 billion pooled fund was announced to promote joint working between the health service, and care and support in 2015/16.
- The Better Care Fund is not new money. It includes existing NHS and social care funding, which will be jointly invested as the biggest ever financial incentive for health and social care to work together and improve outcomes for people.
- £1bn of the Better Care Fund will be tied to local performance. Areas will be assessed against how well health and social care work together to improve outcomes, based upon:
 - ✓ Emergency admissions;
 - ✓ Delayed transfers of care;
 - ✓ Effectiveness of reablement;
 - ✓ Admissions to residential care; and
 - ✓ Patient and user experience

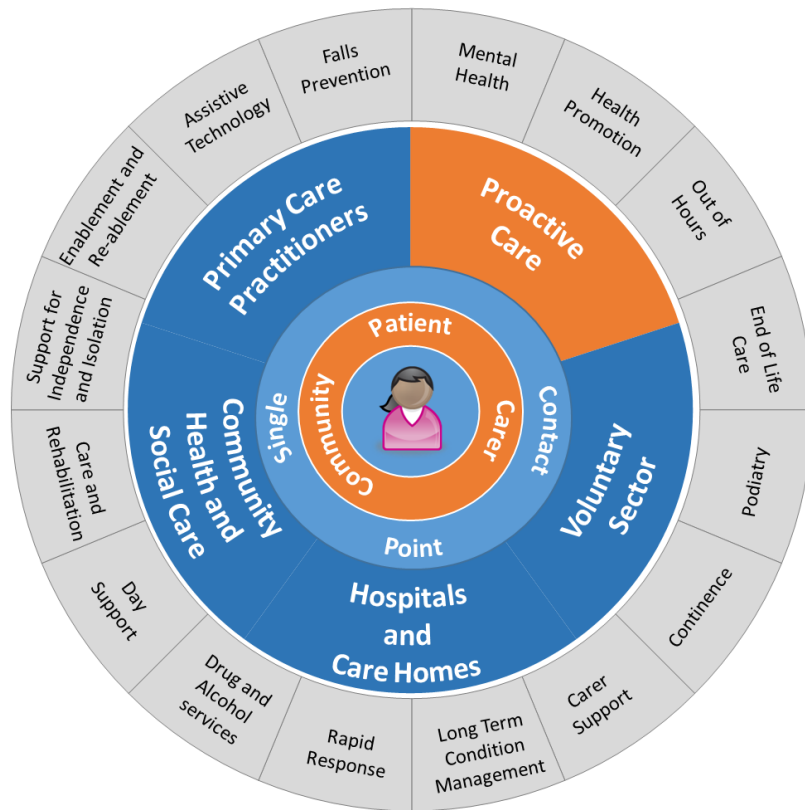
What does Better Care mean in York

- In York, this means that in 2015/16 there will be a pooled budget of £12 million to invest in joint working between NHS Vale of York Clinical Commissioning Group and City of York Council. This budget will grow as the schemes develop.
- This will help us deliver some of our projects in 2015/16 within our longer term five year integration plan.
- York's Better Care Fund plan is focused around three key themes:
 - ✓ Care Hubs
 - ✓ Shared Care Records
 - ✓ Single Contact Point

Care Hubs – an example of how the fund will be used in York

- A Care Hub is a team of health and social care practitioners working together from different organisations and disciplines. The Care Hub team could include a nurse, social care worker, GP, occupational therapist, pharmacist, and a Counsellor from a local provider. Care Hubs will be based in a community setting, such as a local GP surgery.
- Care Hubs will work with individuals to identify their health and care needs now and in the future. They will promote their independence, reduce the risk of conditions escalating and/or relapse in health and wellbeing, to reduce the need for people to attend emergency departments.
- Care Hubs are still developing and we are working with a group of GP practices called Priory Medical Group to test different ways of working before they are introduced across the city from 2015/16.
- The introduction of Care Hubs is linked to a number of other projects we are working on as part of our five year integration plan and the Better Care Fund. These include:
 - ✓ 7 day working

- ✓ Sharing health and social care data - without this our vision for joined up patient centred care will not happen.
- ✓ Protecting adult social care services and implementing the Care Bill.



Contact Details

Author:

Helen Sikora
 Strategy and Development
 Officer
 Public Health & Wellbeing
 Tel 01904 551134.

Chief Officer Responsible for the report:

Wynn Spencer
 ASC Transformation Lead
 Tel: 01904 553235